

This kitchen bursts with joy – from the bright yellow island to the Carnival Oro-coloured Fired Earth splashback. The bespoke units are by Richard Cullinan Joinery and painted in Paint & Paper Library Stone Three. Induction hob, Bosch.

# Sunny SIDEUP

Pops of yellow, burnt orange and ochre give the neutral interiors of this London Victorian terraced house a warm and friendly feeling, perfect for the young family who call it home

Words: **Claire Brayford**  
Photography: **Alexander James and Patrick Williamson**

"We wanted to create a home that had a sunshine feeling," says interior designer Kate Aslangul, founder at London design studio Oakley Moore, who worked with the homeowners to artfully interlace colour with a neutral backdrop to shape this west London Victorian terraced property's cheerful rebirth. "As a former house share, it had been left untouched for two decades," explains Kate. "Cupboard doors were falling off and the kitchen was unspeakable, but the potential was obvious." The property was snapped up by Harry and Jess Peek, a busy couple with two young daughters, who wanted a flexible, hard-working interior that reflected their love of colour and culture. However, as the pair regularly travel for work, the brief also included neutrals, meaning they could temporarily rent it out without having to redecorate. Having worked with Kate on a previous project, they tasked her with the renovation. Her remit: to maximise the footprint, carve out plenty of storage, retain the original character and bring personality and fun. Here, she tells us how it all came together...

#### The brief

The property had a traditional Victorian terrace layout – two reception rooms with a kitchen to the rear – so it was important to squeeze as much space out of the house as possible. This meant reconfiguring the ground and first floors while still maintaining the building's historical integrity. Harry and Jess love colour but did not want anything too overpowering or something that would risk its rental opportunities. They also liked designs with a >



The island was designed to be extra slim, so it would not overpower the room. It was painted in Benjamin Moore's Golden Bounty.

## The FACTS

**Who?** Harry and Jess Peek, with their twins Isabelle and Flora, five months  
**What?** A turn-of-the-century Victorian terraced house that had been split into two flats  
**Where?** West London  
**Cost?** £160,000  
**Time?** Six months



GET SOCIAL with us  
 Follow us on Instagram @kbbmagazine for more inspiration

sophisticated edge so the overall feel had to look polished. Storage was paramount, too, so a downstairs WC was given up for understairs cupboards. Then, to maximise the feeling of space and cohesion, a neutral backdrop and unified flooring was used throughout. Practicality was an important focus, but without sacrificing personality – hence the joy-filled kitchen and considered textiles which run through the rooms.

### Creating the space

With the help of architect Annette Marchini, work began by opening up the back of the house and straightening off the rear with a side-return extension, which created a generously sized kitchen-diner with doors out to the small, paved garden. The 30 sq m space became a dining area and work station for either the children or parents, and features a sofa and TV to relax. For the kitchen, the bespoke Shaker-style cupboards, from Richard Cullinan Joinery, are in a single galley layout with a deliberately slim island – created so as not to dominate the space. The colorful unit boasts plenty of storage including a wine cabinet and bookshelf at either ends, while pendant lights sitting above bring a touch of glamour. Every detail was carefully considered, from the ochre splashback to the size of the sink – it had to be big enough to take an oven tray. There's

nothing worse than having to scrub it on its side. For the rest of the ground floor, the middle room was opened up to form a snug and study space with internal windows through to the kitchen, flooding the room with additional light and allowing Harry and Jess to keep an eye on the children in either space.

The layout was also rejigged upstairs. The main bedroom was extended over the kitchen and an ensuite bathroom created by transforming the space next door. On the second floor, we added an extra pod room as a bolt-on extension above the main bedroom, so the home would still be a four-bed property. A laundry area was also added on the first floor, with a washing machine and dryer ventilated out through the bathroom, so loads didn't have to be carted up and down the stairs – a feature that's becoming more popular in UK homes.

### Finishing touches

The surprises really make this project, while lots of little details connect the space – such as the shade of the rich red front door being picked up in the interior of the understairs storage. These sunset-inspired hues and neutral tones create a seamless flow – you can even find them in the flecks on the stair runner – that all add to a thread of joy and vibrancy running throughout the home. >

**below left** The couple love colour but didn't want to affect their property's rental value – a bright splashback laid in an interesting pattern unites the two. **Sink and tap** for similar, try Franke.

**below** The **flooring** – Ted Todd's Chantilly oak panels – has been arranged in a square pattern. The room is flooded with sunshine through Sash Window Company **glazing**. **Blind fabric**, Blithfield; **pendant lights**, Thomas O'Brien at Visual Comfort.







**above** Elegant green Blithfield **curtains** add pattern to the otherwise pared-back main bedroom. The matching **light** is bespoke by Copper & Silk using Romo fabric and the bespoke **cupboards** by Richard Cullinan Joinery run the length of one bedroom wall to ensure all clutter is neatly hidden away. The **bed** is by Hynnos and the **bedding** Gilly Nicolson.



**right** Playful touches run throughout the home. Adding a shot of colour to the family bathroom is this bright orange **mirror** from Habitat, paired with Chloe Alberry **handles** on the bespoke vanity. The egg timer is to ensure everyone brushes their teeth for long enough. **Sconce lights**, Thomas O'Brien at Visual Comfort.



Soothing neutrals have been used to create a relaxing retreat. **Vanity**, for similar, try Victorian Plumbing; **sanitaryware**, Heritage Bathroom.



In the main bathroom, an elegant freestanding **bath**, for similar, try The Cast Iron Bath Company, has been placed beneath the window framed by a Robert Kime **blind**.



EDITOR'S PICK

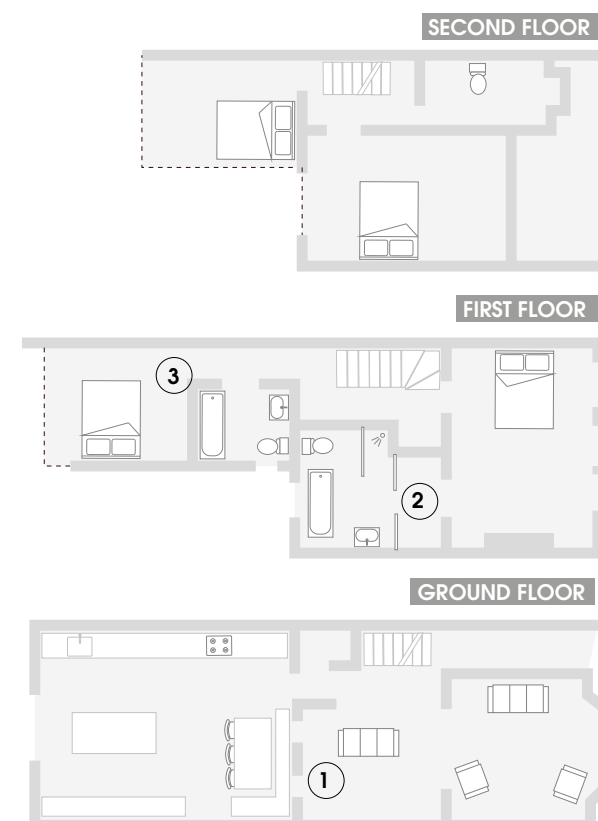
design edit

- 1 Aged brass pendant light, £55, Där Lighting, [darlighting.co.uk](http://darlighting.co.uk)
- 2 Amarelo ceramic tile, £79.56 per sq m, Ca' Pietra, [capietra.com](http://capietra.com)
- 3 Cotswold Ball knob, £13.51, Armac Martin, [armacmartin.co.uk](http://armacmartin.co.uk)
- 4 India Yellow estate emulsion, £49.50 for 2.5 litres, Farrow & Ball, [farrow-ball.com](http://farrow-ball.com)
- 5 Highbury roll-top slipper bath in Dove Grey with grey claw feet, £429.99, Bathroom Mountain, [bathroommountain.co.uk](http://bathroommountain.co.uk)

The PLANS

Adding a side-return extension and squaring off the back of the property allowed for the creation of a spacious kitchen-diner, while the pod bedroom ensured the footprint retained four bedrooms.

- 1 **Illumination** Internal windows were added to ensure light floods the space.
- 2 **Convenience** An additional bathroom was created for the main bedroom as well as a dressing area.
- 3 **Sleeping** The first floor bedroom was extended over the kitchen. On the second floor, a pod room was added as a bolt-on extension so the property remains as a four-bedroom house.



SOURCEBOOK

- Architect** Annette Marchini 020 7720 4202 [marchini-architecture.com](http://marchini-architecture.com)
  - Interior design** Oakley Moore 0207 351 3474 [oakleymoore.com](http://oakleymoore.com)
  - Cabinetry** Richard Cullinan Joinery 020 8871 0029 [rcjoinery.co.uk](http://rcjoinery.co.uk)
  - Induction hob** Bosch 0344 892 8979 [bosch-home.co.uk](http://bosch-home.co.uk)
  - Splashback** Fired Earth 01295 812088 [firedearth.com](http://firedearth.com)
  - Sanitaryware** Heritage Bathroom 0330 026 8503 [heritagebathrooms.com](http://heritagebathrooms.com)
- For full stockist information, see page 142 KBB